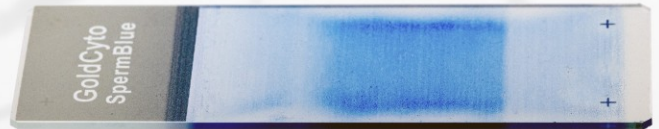
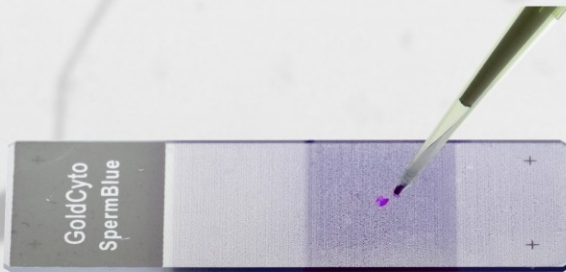


SpermBlue® Pre-stained slide



Protocol A. Manual and SCA Manual Analyzing

- 1).Add 1ul-2ul fresh (or washed) semen on to deep color area of pre-stained slide , and stir the semen 1-2 circles to mix
- 2).cover with coverglass and press gently on it
- 3).go to the microscope observation



Protocol B.

- 1).Add on 3-5 ul fresh (washed) semen near the edge of the color area
- 2).Make the smear like the figure
- 3).Wait for air dry
- 4).Wash by drop the slide into water 1 second and shake on the tissue to air dry the slide .
- 5).Wash again as C .
- 6).Go to the microscope observation

