

EVOLUTION

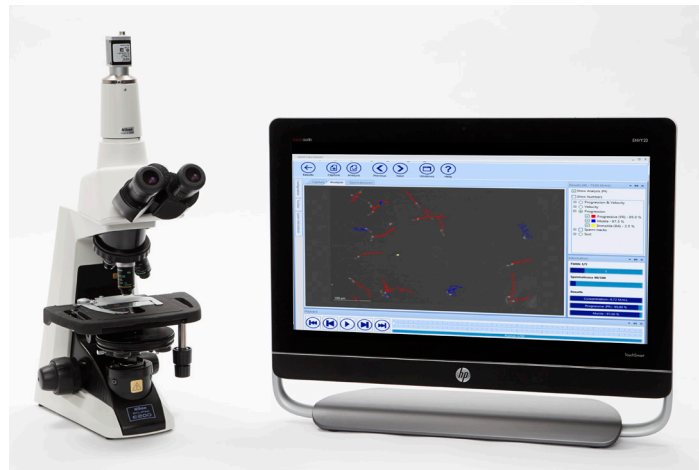
TOX

MORE THAN JUST BASIC SEMEN ANALYSIS



MICROPTIC
AUTOMATIC DIAGNOSTIC SYSTEMS

SCA® CASA SYSTEM FOR TOXICOLOGY: WORKING WITH MOUSE AND RAT



Ideal for testing drugs, chemicals and radiations for their toxicity.

SCA® CASA System for semen analysis allows the **accurate, repetitive** and **automatic** assessment of the following sperm parameters:

Motility and concentration

Analysis of sperm motility and sperm count.

Morphology

Morphometry analysis and morphology classification of stained semen samples observed in brightfield microscopy.

DNA Fragmentation

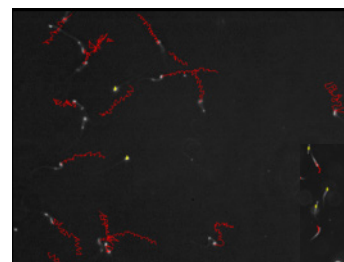
Analysis for evaluating the level of damage in the sperm chromatin. Moderate damage is related to alterations during embryo and fetal development.

Vitality

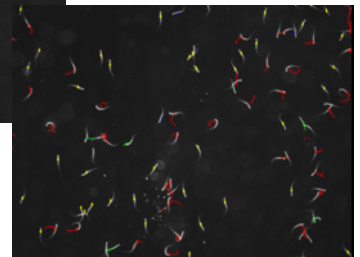
Estimated by assessing the membrane integrity of the cells.

Acrosome reaction

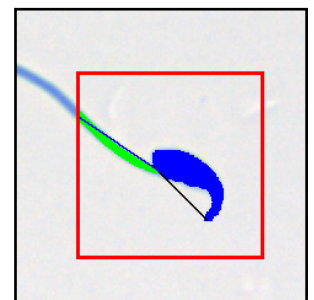
It provides the percentage of acrosome intact and acrosome reacted spermatozoa.



Analysis with 10x negative phase contrast and 100 frames per second.
Mouse sperm sample.



Analysis with 4x in brightfield (pseudo phase contrast) and 100 frames per second.
Rat sperm sample.



Morphology analysis with 40x brightfield.
Mouse sperm stained with SpermBlue.



MICROPTIC
AUTOMATIC DIAGNOSTIC SYSTEMS



ISO 9001
ISO 13485